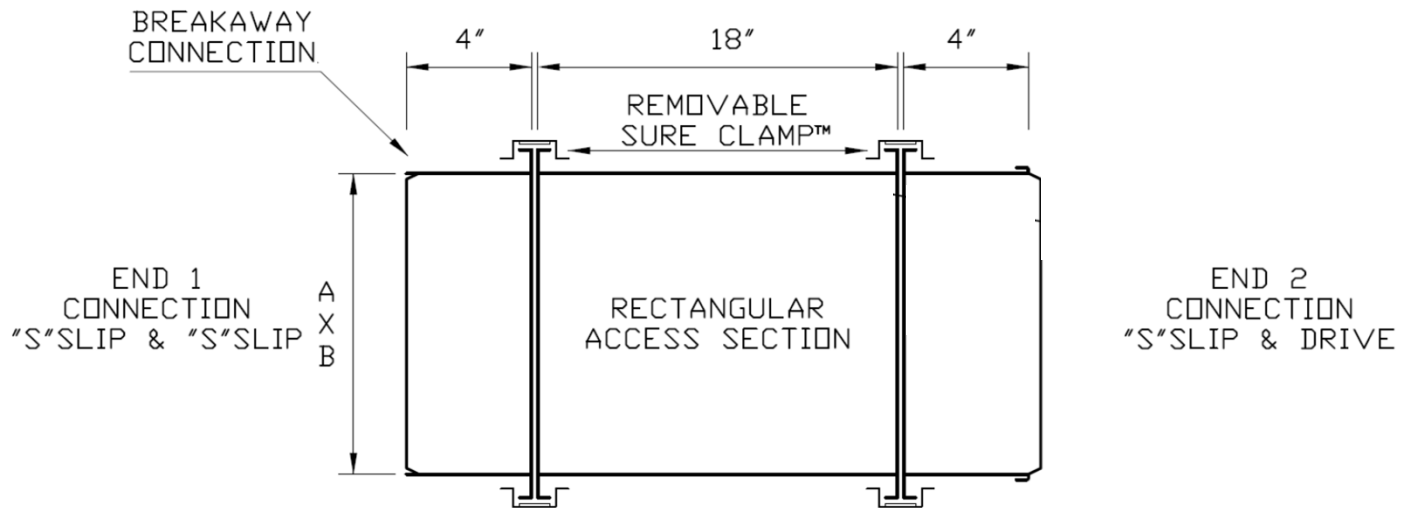


# SUBMITTAL

## SURE • CLAMP™ ACCESS



- A. General Description: Rectangular Clamping type removable ductwork section with draw latch.
- B. Provide size as indicated on drawings.
- C. Size: 18" X 18" maximum size.
- D. Material: Galvanized ASTM A527
- E. Flange Connection: 18 GA galvanized sheet metal construction.
- F. Seams: Pittsburgh Lock
- G. Access Section : Minimum 26 Gauge galvanized ASTM A527 18" long.  
Fabricated to maintain 100% of ductwork free area.
- H. Clamps: 20 Gauge galvanized with zinc coated draw latch. Gasket profile forms to the inside of clamp and seals the outer edges of the ductwork flange.
- I. Gasket: Neoprene gasket 3/16" X 1-1/4"
- J. Seal seams in accordance with SMACNA HVAC Duct Construction Standard - Metal and Flexible.
- K. Install: The removable access section shall not be more than 4" away from the fire damper sleeve break away connection.